



# WORKDAY CORE HCM



## About Workday

Workday is an on demand Human capital management (HCM) software. It is web based ERP software. It was built on modern objected oriented technology, cloud based with online web access. Workday Functional, HCM, Integration provides with real time experts. Overview of Work Day training

# WORKDAY KEY FEATURES

## 30 hours of Learning Core HCM

A 360 degree learning approach that you can adapt to your learning style



## 2+ Realtime Projects

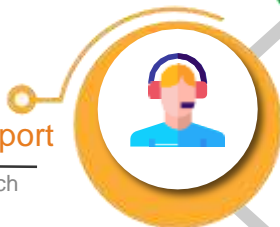
Gain real time experience and profound knowledge by involving in handson projects and get hired quickly



## 24x7 Support

Having any technical issue? Reach out our Support to have an immediate

solution



## Job Placement Assitance

Our personalized and interactive learning experience will help you to land at your dream company.



## Pay in easy Installments

With secured hassle free payment gateway you can pay the course fee in two installments



## Live sessions with Instructor

The best approach of learning is achieved by having a interactive session. With live interactive sessions you can fulfill your goals at a faster pace and provide 24/7 Access



## Mock Interviews

We have dedicated sessions after the training classes for interview preparation.



## Why Should You Learn **Workday** Course?

Companies using Salesforce Marketing Cloud for Marketing Automation include: Ford Motor Company, a United States based Automotive organization with 190000 employees and revenues of \$155.90 billions, Deloitte, a United States based Professional Services organization with 312000 employees and revenues of \$46.20 billions, ACE Insurance, a United Kingdom based Banking and Financial Services organization with 21000 employees and revenues of \$36.40 billions, Air Liquide, a France based Oil, Gas and Chemicals organization with 67000 employees and revenues of \$25.90 billions, H. J. Heinz Company. A United Kingdom based Consumer Packaged Goods organization with 34200 employees and revenues of \$18.34 billions and many others.



## Who Should **Learn Workday**?

The following job roles will get benefited from learning the SFMC course:

- Freshers or graduates
- Integration developers
- IT Professionals

## About **Leotraining**s

Leotraining – Provide Workday online global training platform connecting individuals with the Real time industry experts around the globe. With the diverse range of courses, Training Materials, Resume preparation, interview preparation and On Job Support, we have it all covered to get into IT Career. Instructor Led Training - Made easy.



## Course Overview

**Workday HCM** is a set of practices related to people resource management or cloud based human resource management solution that assists global enterprise application that unifies human resources, benefits, talent management, payroll, time and attendance as well as recruitment and businesses of all sizes in a variety of industry verticals with workforce planning, analysis, and execution.

## Course Content

Workday will significantly improve HR and payroll compliance, reduce risk, provide better data for decision making, and increase efficiency across the institution. It will also enable people from the University to work more efficiently thanks to consistent, streamlined and modern practices.

# Workday Core HCM Curriculum

## 1. Core Concepts And Basic Navigations

- Workday Framework

- Working in Workday

- Workday Tools

- 1.What are Business Objects

- 2.Basic Navigations

- 3.Additional Navigation Topics

- Inbox

- Bulk Approvals

- Notifications

- Worklets

- 1.Landing page Configuration

- 2.Related Action Menus

- 3.Search Functionality

- 4.Actionable Reports

- 5.Dashboards

## 2. Organizations

- 1.Organization Types

- 2.Supervisory Organization

- 3.Setup of Supervisory Org

- 4.Managing of Supervisory Org

- 5.Organization Hierarchies

- 6.Location Hierarchies

- 7.Reorganization

- 8.Organization Reports



## 3. Staffing Models

- Defining Staffing Model
- Hiring Restrictions
- Differentiating Staffing Models
- Maintaining Staffing Models

## 4. Jobs And Positions

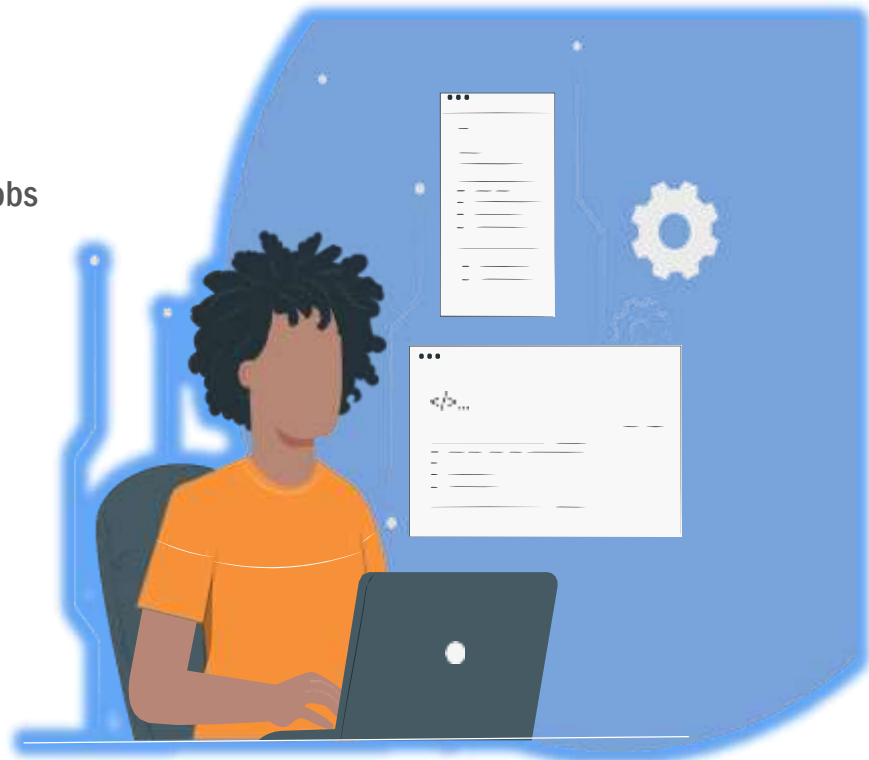
- Job Profiles
- Differentiating Job Profiles, Job Families and Job Family Groups
- Creating Jobs and Positions
- Job Requisitions
- Manage Filled and Unfilled Positions and jobs

### 1.Compensation

- Compensation Overview
- Compensation Eligibility Rules
- Compensation Grades
- Compensation Plans and Packages
- Compensation Events
- Compensation Reports

### 7. Hiring Workers

- Hiring Overview
- Hiring and Supervisory Organizations
- Process Overview
- Hire Process



## **8. Configurable Security**

- Security Platform
- Security Groups
- Advance Security Groups
- Real Time scenarios and errors Troubleshooting

## **9. Reporting**

- Reports Overview
- Standard Reports
- Custom Reports
- Creating Custom Reports
- Calculated Fields



## **10. Business Process**

- Business Process Framework
- Business Process Configuration Options
- Business Process Functionality
- Business Process and Sub process

## **11. Additional Staffing Transactions**

- EIB Overview
- Outbound EIB
- Inbound EIB
- Custom XSLT
- Core Connector Worker



TRUSTED BY COMPANIES

WORLDWIDE & 499K LEARNERS





## Contact Details

USA:+1-9553323599

UK: +44-9553323599

India:+919553323599

+91-9553155200

<https://leotrainings.com/>